

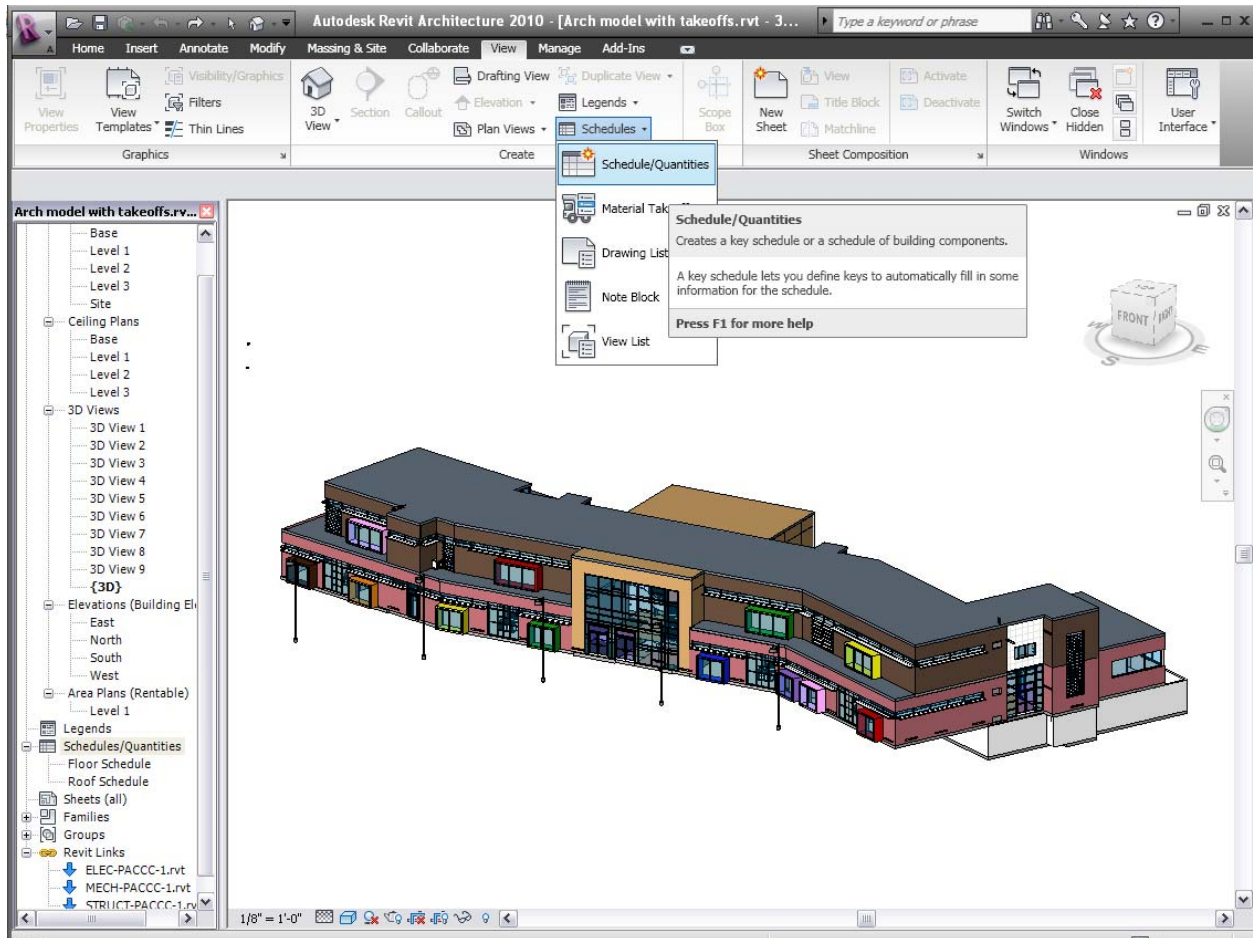
Generating Schedules

Abstract

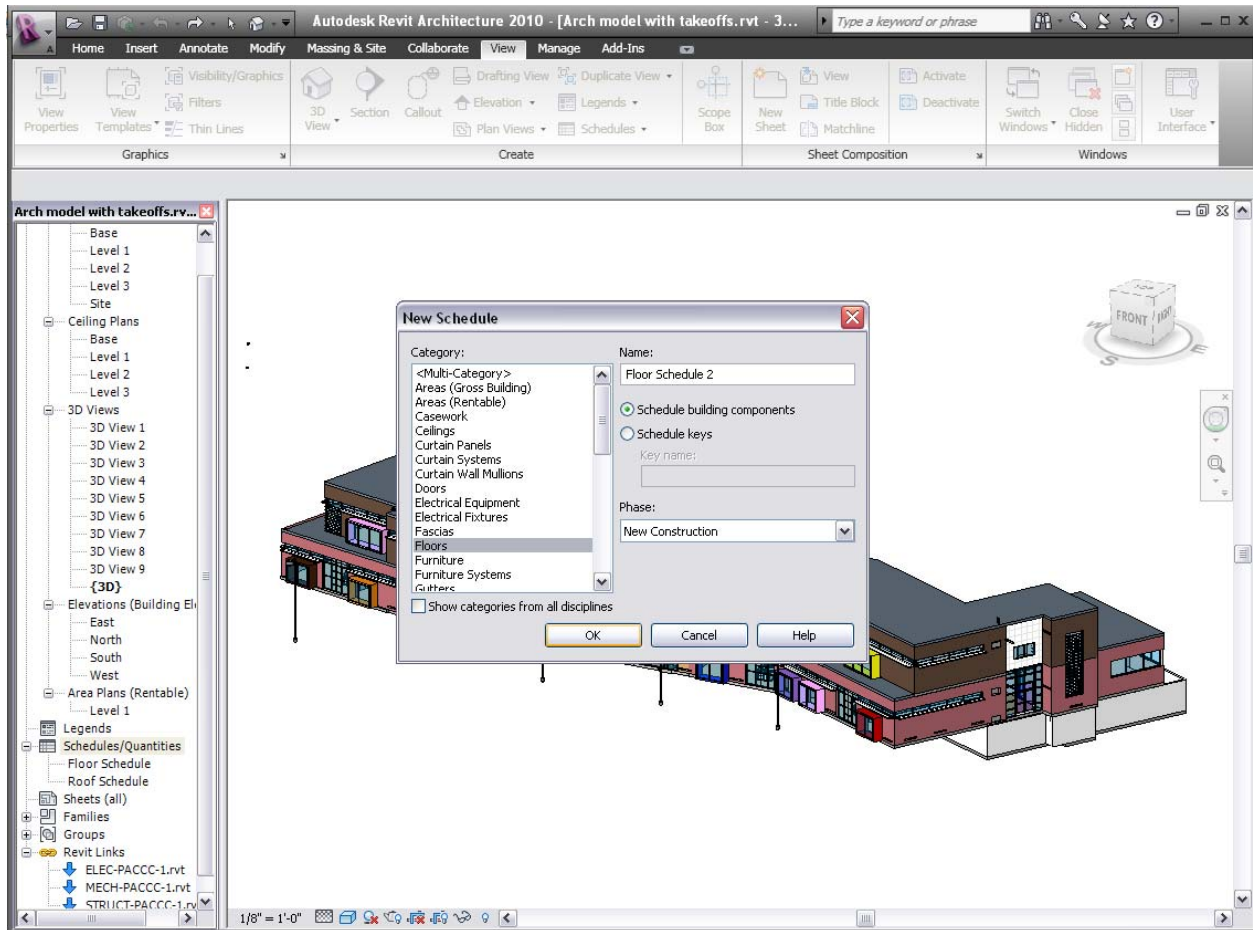
This document will provide a step-by-step process to create and total schedules in Revit.

Process

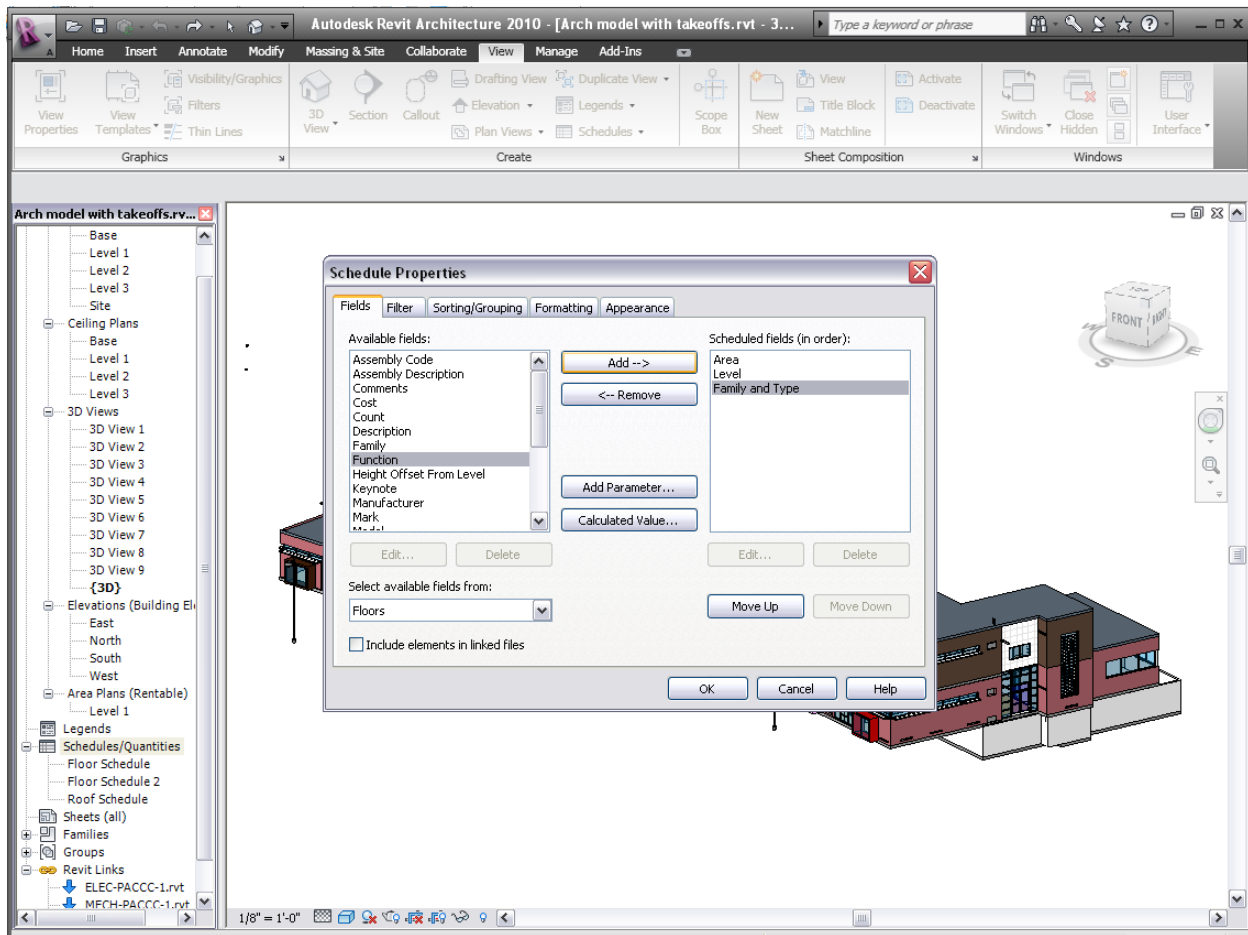
Step 1. Under the View tab click on Schedules tab and select Schedules/Quantities from the drop down menu.



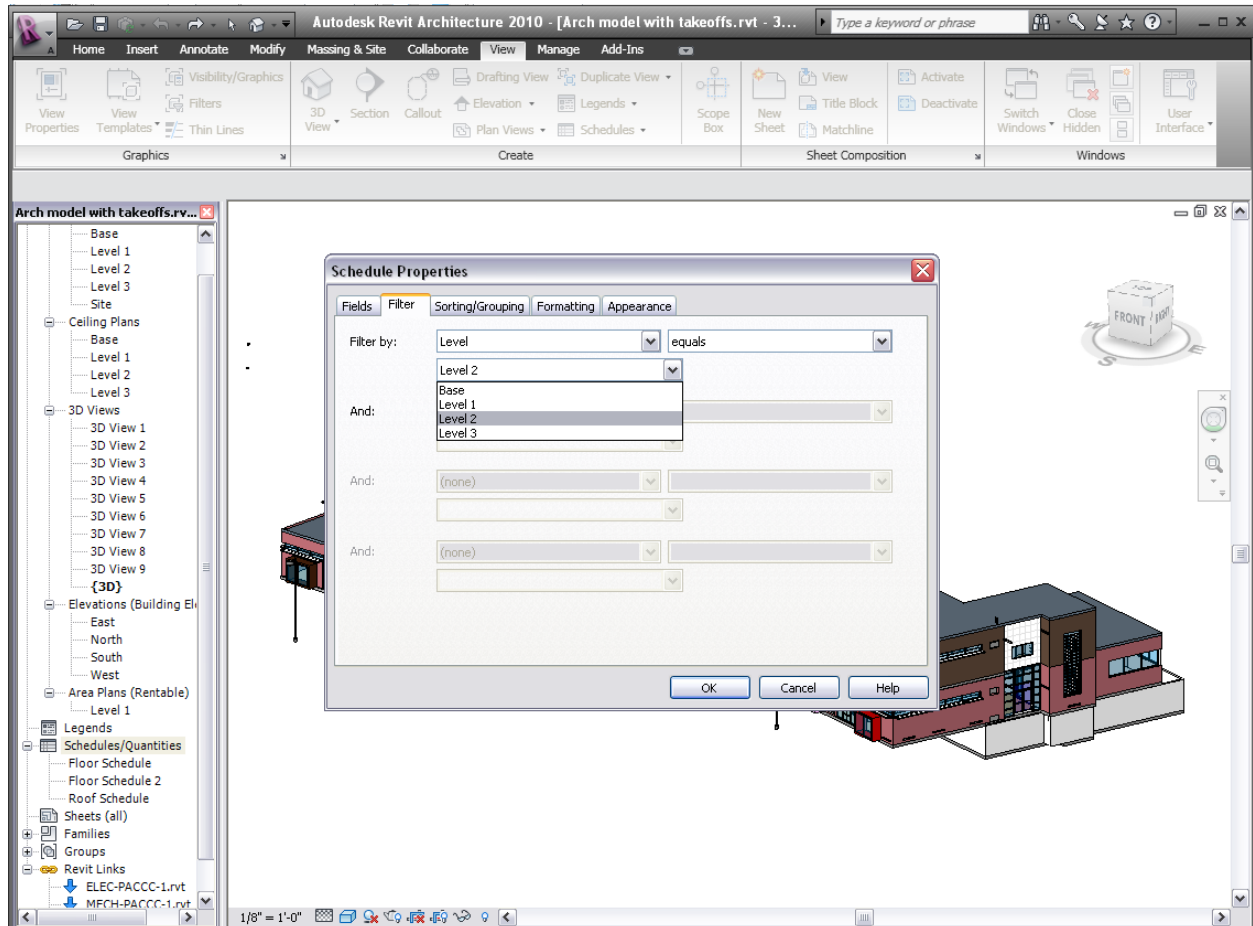
Step 2. New Schedule dialogue box will appear on screen. Select the Category desired to calculate and click OK.



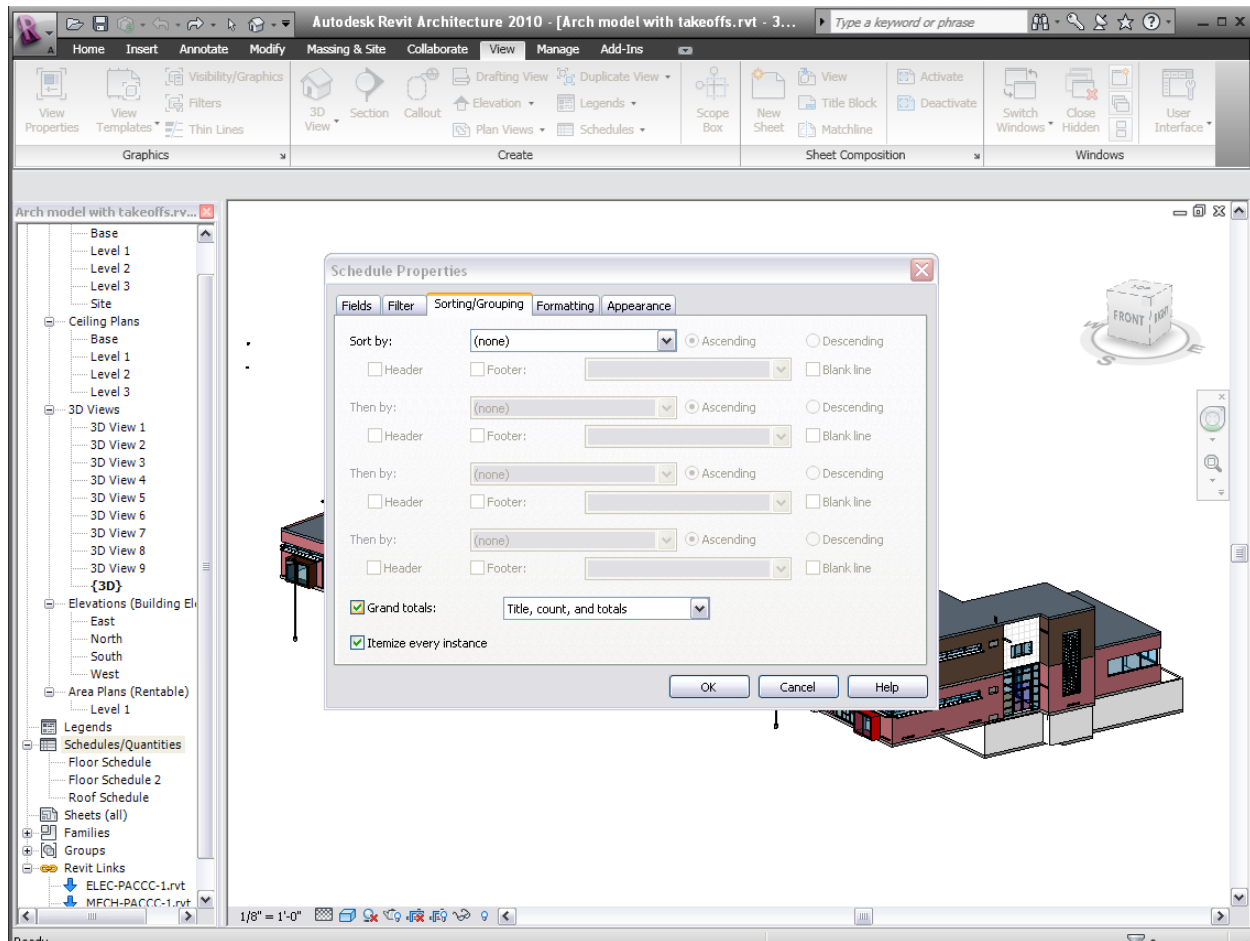
Step 3. Schedule Properties dialogue box will appear on screen. Under Fields tab select desired Available fields. To select a field click on field and then click on add to move field from Available Field to Scheduled Fields.



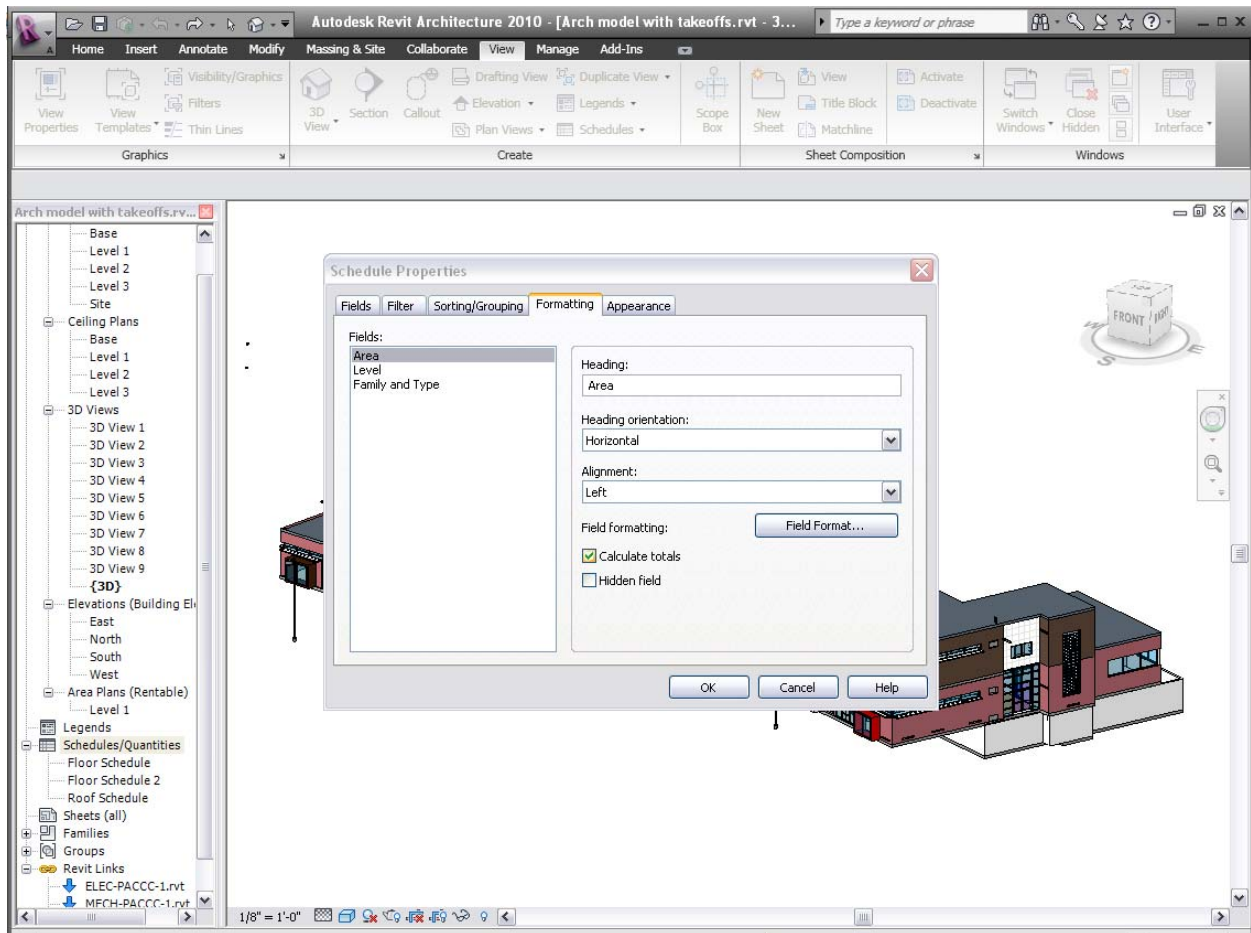
Step 4. Let's say you only want to know the areas of floors on Level 2. Under Filter Tab in Schedule Properties From drop down menu select Filter by: Level. Select equals in drop down menu to right and Level 2 from drop down menu below. Other options are available to filter by as well and narrow down your schedule even more.



Step 5. Under Sorting/Grouping Tab there are options for Sorting the data however for calculating the floor areas this is not necessary, however a very important step is to check the box that says Grand Totals.



Step 6. Under the Formatting tab in the Fields box click on Area and check the Calculated totals check box. If other data is desired to be totaled each Field must be clicked on individually and the Calculate totals check box must be checked. Then click OK



Step 7. The Schedule will appear on the screen. In the example shown the total SF of Level 2 Floor Area has been totaled. The schedule is automatically part of the Schedules/Quantities Menu on the Left hand side of the model.

Autodesk Revit Architecture 2010 - [Arch model with takeoffs.rvt - S...]

Home Insert Annotate Modify Massing & Site Collaborate View Manage Add-Ins Modify Schedule/Quantities

Headers: Group Ungroup Rows: New Delete Highlight in Model Schedule

Modify Schedule/Quantities

Arch model with takeoffs.rvt

Floor Schedule 2		
Area	Level	Family and Type
1089 SF	Level 2	Floor: Floor Carpet Class
72 SF	Level 2	Floor: floor Concrete
1075 SF	Level 2	Floor: Floor Carpet Class
2247 SF	Level 2	Floor: Floor Carpet Class
1135 SF	Level 2	Floor: Floor Carpet Class
29 SF	Level 2	Floor: floor Concrete
75 SF	Level 2	Floor: Floor _Wood
30 SF	Level 2	Floor: Floor- Service
38 SF	Level 2	Floor: Floor- Service
59 SF	Level 2	Floor: Floor Carpet-green
1423 SF	Level 2	Floor: Floor Carpet-green
75 SF	Level 2	Floor: Floor _Wood
143 SF	Level 2	Floor: Floor _Wood
75 SF	Level 2	Floor: Floor _Wood
151 SF	Level 2	Floor: Floor _Wood
46 SF	Level 2	Floor: Floor Ceramic
77 SF	Level 2	Floor: Floor- Service
49 SF	Level 2	Floor: Floor- Service
43 SF	Level 2	Floor: Floor- Service
49 SF	Level 2	Floor: Floor- Service
7980 SF		

Base
Level 1
Level 2
Level 3
Site
Ceiling Plans
Base
Level 1
Level 2
Level 3
3D Views
3D View 1
3D View 2
3D View 3
3D View 4
3D View 5
3D View 6
3D View 7
3D View 8
3D View 9
{3D}
Elevations (Building El
East
North
South
West
Area Plans (Rentable)
Level 1
Legends
Schedules/Quantities
Floor Schedule
Floor Schedule 2
Roof Schedule
Sheets (all)
Families
Groups
Revit Links
ELEC-PACCC-1.rvt
MECH-PACCC-1.rvt